

decorating

Real Rooms, Real Style

- Add zing with easy accents
- Update your kitchen and bath
- Find storage in every room

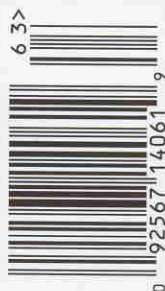
20
Design Tips

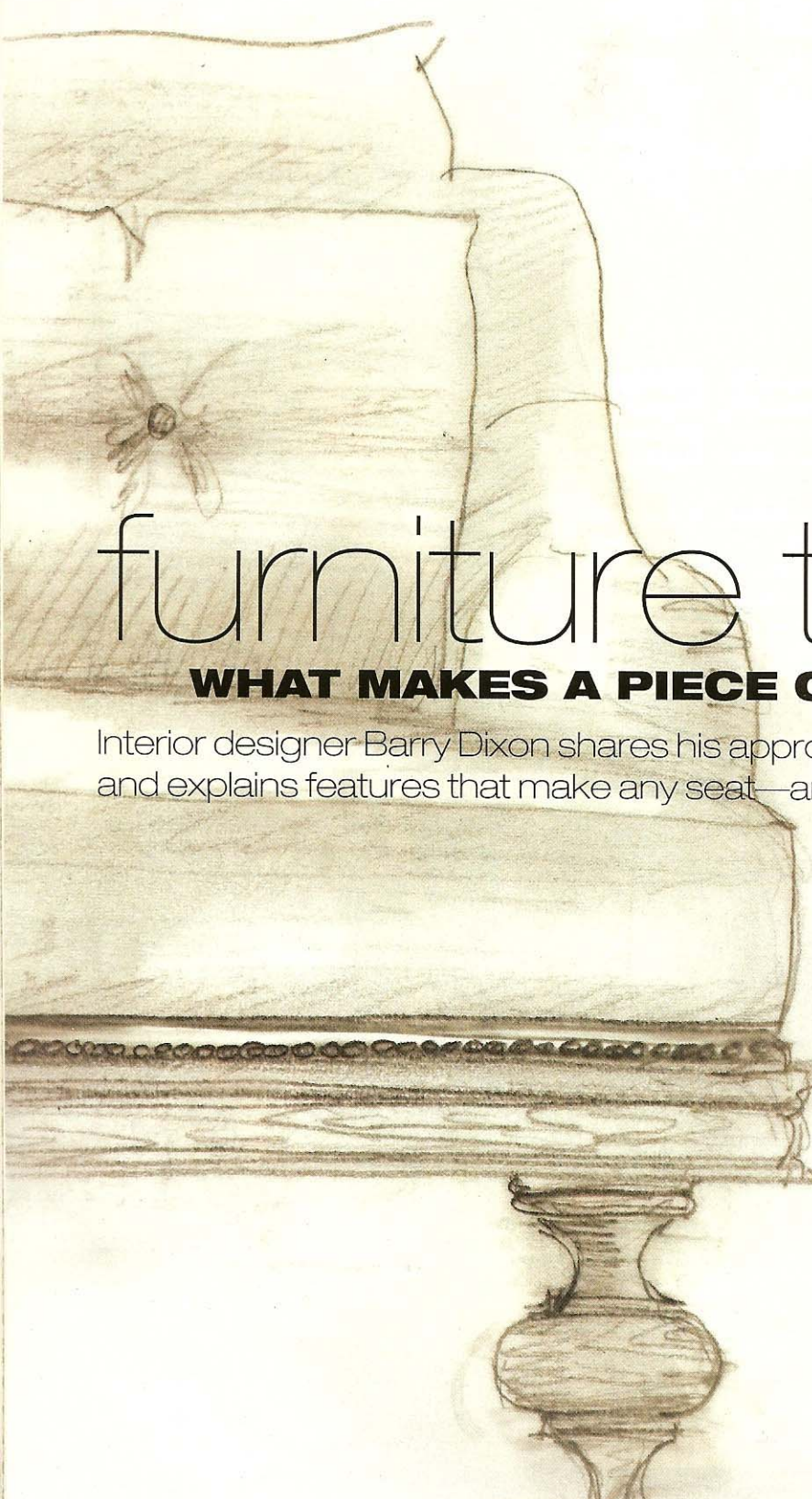
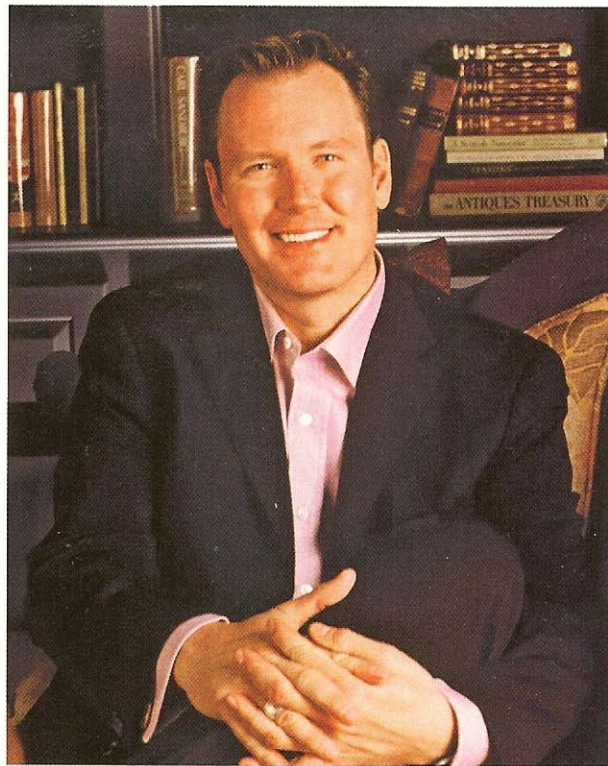
that stand the test of time p. 72

Brighten a Room with Lampshades p. 48

Fall 2006
Display until October 31

\$5.99 U.S. / \$7.99 CAN.





furniture that fits

WHAT MAKES A PIECE COMFORTABLE?

Interior designer Barry Dixon shares his approach to custom furniture and explains features that make any seat—and room—feel better.

From his home and studio in Virginia hunt country near Washington, D.C., designer Barry Dixon enjoys a clientele for whom he often creates custom furniture. Usually what sparks such pieces is the specific needs of his client, whether they're centered on the room or on the person. Furniture that fits—a personality, a lifestyle, and a space—is the result. It's also the defining element of the Barry Dixon Furniture line for Tomlinson/Erwin-Lambeth that's handcrafted in the United States. To view the entire collection, visit www.barrydixon.com.

What's your furniture design philosophy?

Furniture should have practicality and beauty, not necessarily be of one discernible period, and be comfortable for the physique of the person using it. That's the ideal.

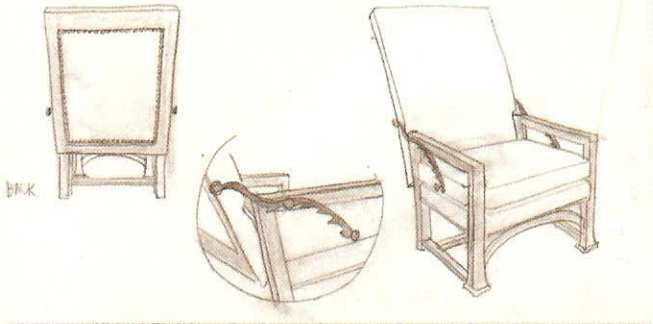
How should people choose the style of furniture for their homes?

Furniture is best when it's not always discernibly pigeonholed. A piece that blends two or more styles together becomes



ARTS & CRAFTS, MECHANICAL, KINETIC,
MASCULINE & CASUAL.

[Handwritten signature]



CRAFTSMAN CHAIR

timeless. For instance, the silhouette of a Georgian chair whose upholstery is accented with nailhead trim is presenting a fresh look at something very traditional. Quirky pieces that tie things together in a room make them all seem custom. It's what makes the space unique to the people who live there.

What inspires a new design?

The first question becomes, "Who will be using the space?" A man? A woman? That's what makes the design masculine or feminine. Size and proportion become factors. A chair that's comfortable for a man might be too roomy for a woman, and upholstery can set the tone for a piece that's androgynous. For instance, a ruffled skirt on a chair or sofa is a feminine detail. Adding box pleats or a tailored skirt makes it more masculine. Remember that upholstery fabric makes a gender statement, too. Nubby fabrics, dark colors, and leather say masculine, while satinlike textures in soft or floral tones are decidedly feminine. Even the choice of shape of an ottoman can complement a feminine or masculine space.

It becomes a personal choice for the person living in the space. It's a bit like bespoke clothing, meaning

made especially for. When it's done, it fits. It's made for you, your lifestyle, and your home.

What furniture pieces do you consider must-haves for any home?

The first must is a comfortable place to sit. If you can buy only one thing for the living room, make it a comfortable sofa—or chair. Next would be a table. I like to use tea tables, but something very elemental to put a lamp or a book on is next, and then lighting. With those three things you can live in that room day or night.

What three accent pieces are most important for developing a style?

If you think of the three things we just mentioned—seating, lighting, and a table—as the "primary colors" of a room, then these are the "secondary colors" of the space: An ottoman, so you can put your feet up. Then some pull-up seating—small-scale chairs or stools, things that can easily move around. Next are accent tables—those little things that hold just one drink or one book and your reading glasses.

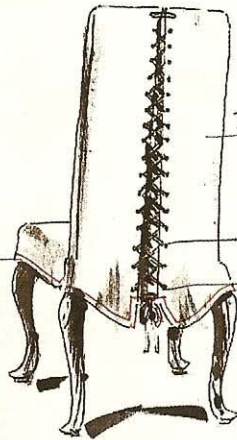
Tomlinson/Erwin-Lambeth, Inc.

QUANTITY 7
 ALL TRIM: KRAVET B. BARRY
 April 2006

NORMA CHAIR



DANA ROUND OTTOMAN



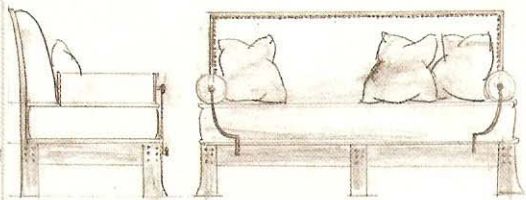
BD103 Chair

CORSET CHAIR

TJA - TEXTILE FABRIC 1520
 GRASS - COLOR CALVIN
 LACING [SAME COLOR AS GRASS]
 GROMMET OLD GOLD
 ARTS & CRAFTS, MECHANICAL TO MIX W/ SOFTEN



MICHAEL SOFA



(MATTRESS SEAT)

TRIVET TABLE



What about dual-function pieces, such as an ottoman that's seating, as well?

An ottoman like our Dana Round or Rectangular that doubles as pull-up seating would qualify. Then there's see-through furniture: pedestals that are tall and thin or iron-lace tables, such as our Trivet or Dauphine tables, that allow light and the scene beyond to filter through. They're functional but not visually weighty. Traditional tilt-top tables qualify, as does the telescoping Martini table from our new line that can be adjusted for height to suit the occasion.

Form can speak to the emotions, too. The elegant line of a chair that casts a beautiful shadow in the late afternoon sun offers more than simply seating.

What features in your seating pieces make them comfortable yet adaptable?

Some pieces I made, and even named, for specific clients, then realized that with minor adjustments they

could be adapted to fit varying needs of physique and space. As an example, the Maria sofa can be concave or convex depending on the room's shape. It is almost like two bergères with a camel back. It offers women a cozy space to curl into.

The Michael sofa, with a straight-line back, says masculinity. The long swing-arm bolster allows guys to sit sideways and talk with each other and use the bolsters as armrests while maintaining their space.

The Norma chair might be used in a smaller space when the look, comfort, and feel of a full-size wing chair is not appropriate or practical. Scale is not only about the person, but the space as well.

The sloped back of Craftsman chair is adjustable, but it's not a hidden mechanism. It's part of the design.

The furniture styles adapt to accommodate individuals' preferences for a room or for themselves.